

# RECOMA

## Our feel, our passion



From energy to industry, from research to health. Gases are present everywhere in our daily lives and the cylinders that contain them should always guarantee the maximum safety for users. Each working day in Recoma starts with this philosophy.

With passion for the job and the determination to do it better every day.



# Our facility



Recoma Group is divided into three operating areas

## RECOMA

Projects, products and services for gas

## TRASER

ADR transport and gas services

## ALCRYO

Technologies and services for cryogenics

Medieval town of Sermoneta

Industrial Area, Recoma Site

## RECOMA GROUP

Technology, equipment and services for gas and cryogenics since 1992

# Conquest of Consensus Standard



Professional discipline, reliability and confidence have been obtained day after day, year after year.

This is how Recoma has obtained the consensus of the leading companies in the field of gas.

A consensus that will always be reciprocated with high quality products and services.

AIR LIQUIDE

BRC  
Gas Equipment

ENI

LINDE GROUP

SIAD

RIVOIRA

SAPIO GROUP

SOL GROUP

SUD PETROLI



# Product and service



Cylinders, cylinder bundles are standard products that Recoma Group tests, riasebling and builds. Added to these are special products, entirely designed and manufactured by Recoma, such as MEGC and battery-vehicles that meet the requirements of its customers.

All products are certified in compliance with European standards.

## **Cylinders**

Industrial line  
Medical line  
Food line  
Pure line

## **Cylinders bundle**

MEGC  
Vehicle battery  
Metal structural  
Transport



# Design and Product Development



By Our Engineering Staff are ready to bring the image of your company in Italy and Europe



The Recoma engineering department is the laboratory where ideas are born and developed thus giving rise to highly innovative products. The TPED bundles, the construction of the CAL 1 racks, the creation of MEGC/135/M, new battery vehicles or requalified, facilities for processing line and many other products are created and developed from the commitment and the professionalism of our technical office.



The gas market continues to expand, this allowed us to grow in terms of turnover, resources and knowledge. The purpose is to consolidate its leadership in Italy and to conquer new shares in the international market with technologically advanced products.

**Our Vision**

# Certificates



## INAIL

ISTITUTO NAZIONALE PER L'ASSICURAZIONE  
CONTRO GLI INFORTUNI SUL LAVORO



### Apragaz

Quality Assurance

Certificato nro 11/IT/2004



The certificates allow Recoma Group to develop new projects based on customer's requests.





## BATTERY VEHICLE

Our **BATTERY VEHICLES** are able to transport any type of gas in standard or high pressure, depending on a need of a customer, with a different number and type of tubes.



# Battery Vehicle



As far as the transportable pressure equipment is concerned, the battery vehicles is surely the system that allows the transport of large quantity of gas with a maximum autonomy because provided of a tractor.

We have developed various types of vehicles according to customer needs.



# Battery Vehicle



12 TUBES





# Battery Vehicle



11 TUBES

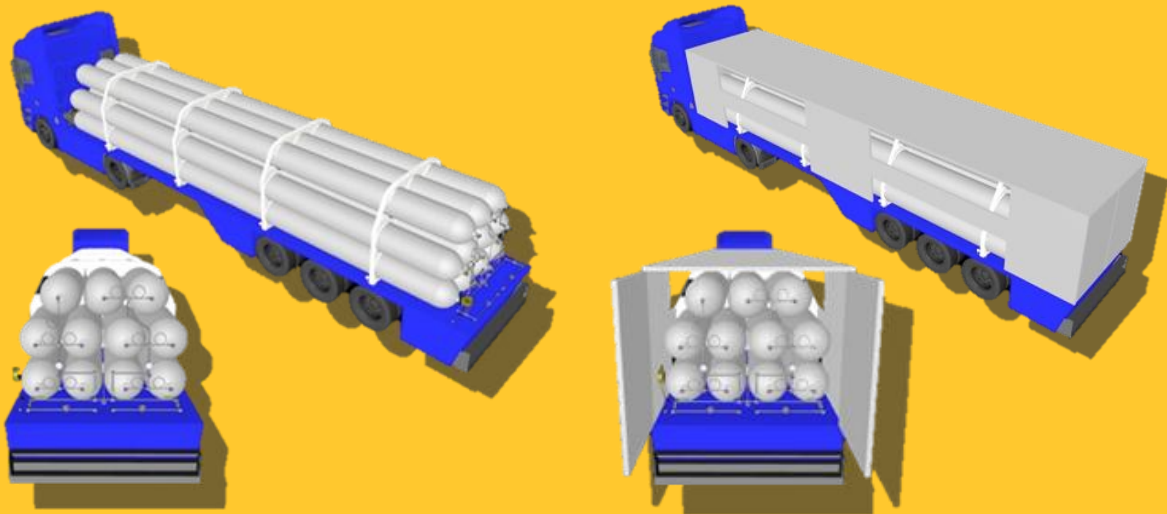




# Battery Vehicle



Model: 200 bar



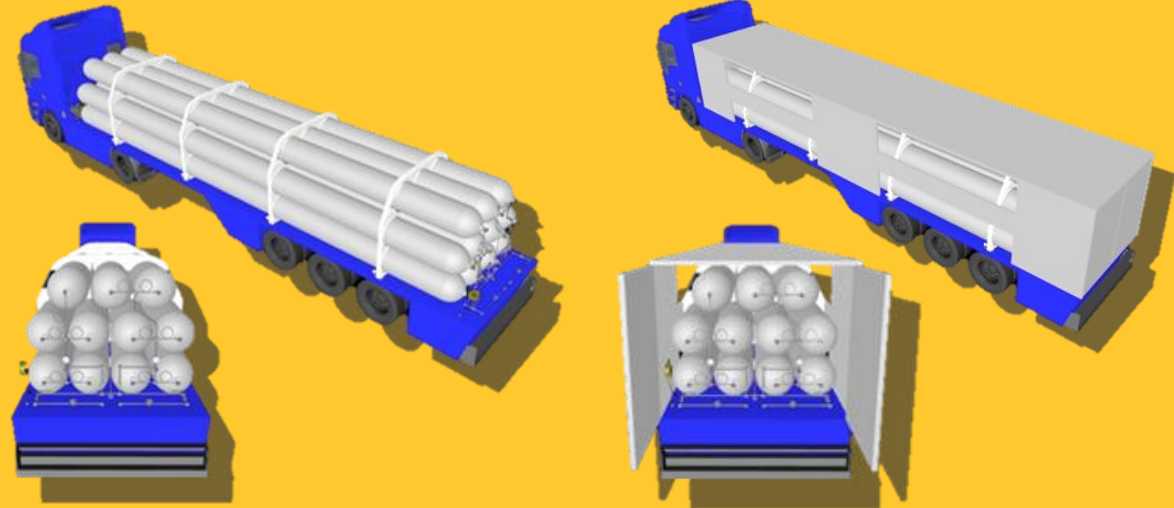
| Basic configuration<br>and technical specifications | Battery vehicle –<br>without panel | Battery vehicle –<br>with panel |
|---|------------------------------------|---------------------------------|
|   | Max filling pressure               | Max filling pressure            |
|   | 200 bar                            | 200 bar                         |
| Total CNG m <sup>3</sup>                            | 4609                               | 4609                            |
| Total CNG weight                                    | 3318 kg                            | 3318 kg                         |
| Full-loading weight                                 | 35100 kg                           | 36000 kg                        |

# Battery Vehicle



## Models:

- 11 tubes 250 bar without panel
- 10 tubes 250 bar with panel



| Basic configuration<br>and technical specifications | Battery vehicle - 11 elements | Battery vehicle – 10 elements |
|---|-------------------------------|-------------------------------|
|   | Max filling pressure          | Max filling pressure          |
|   | 250 bar                       | 250 bar                       |
| Total CNG m <sup>3</sup>                            | 5445                          | 4950                          |
| Total CNG weight                                    | 3920 kg                       | 3564 kg                       |
| Full-loading weight                                 | 35800 kg                      | 34800 kg                      |
| Full-loading weight + truck                         | 43800 kg                      | 42800 kg                      |

# Battery Vehicle



**SMIT BUNDLE 320**  
cylinders x 50 l





# Battery Vehicle



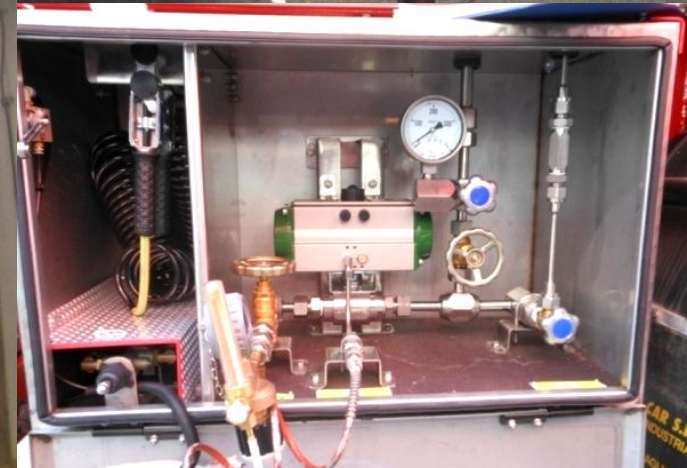
**ACR**  
BUNDLE 320 cylinders x 50 l



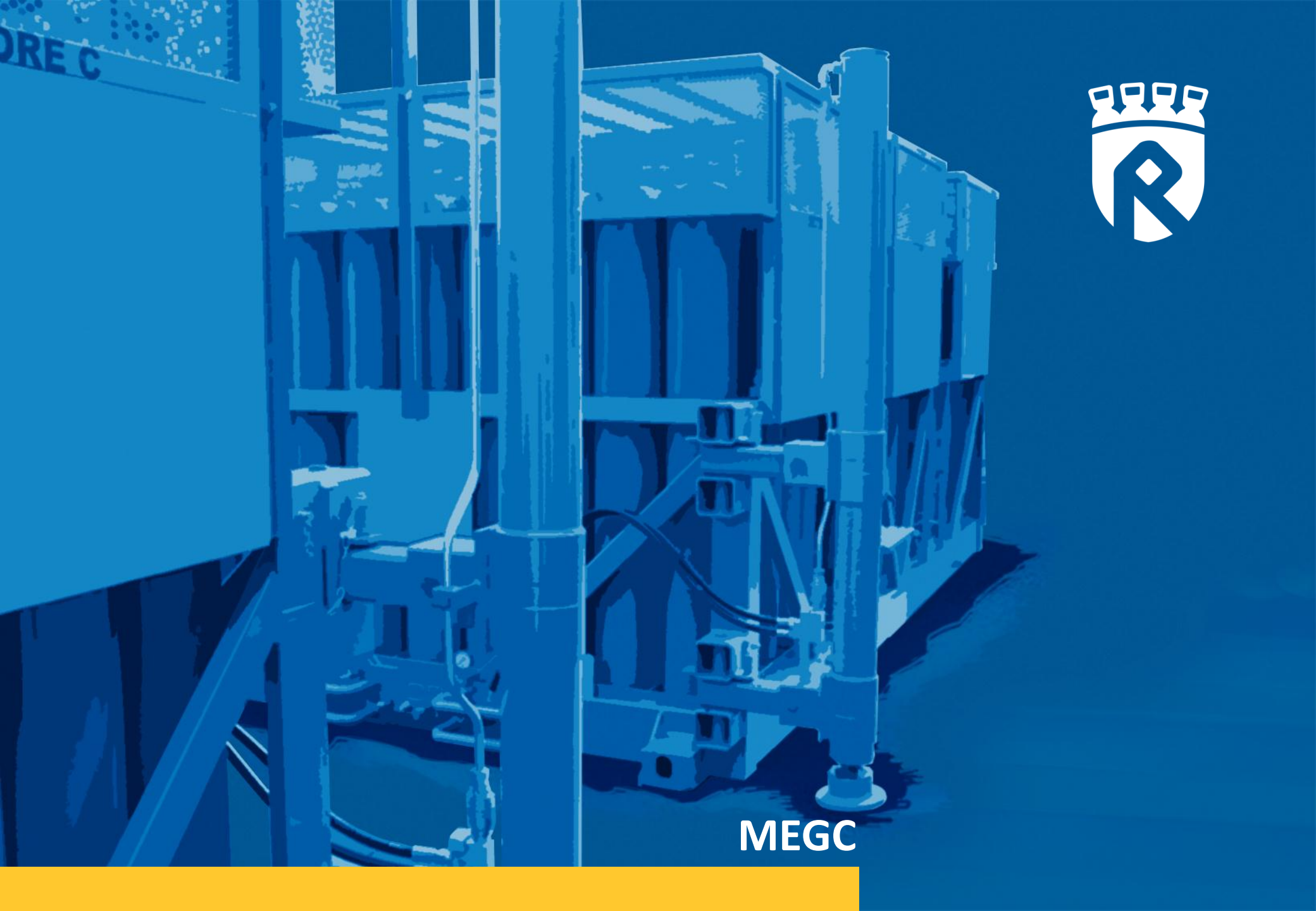
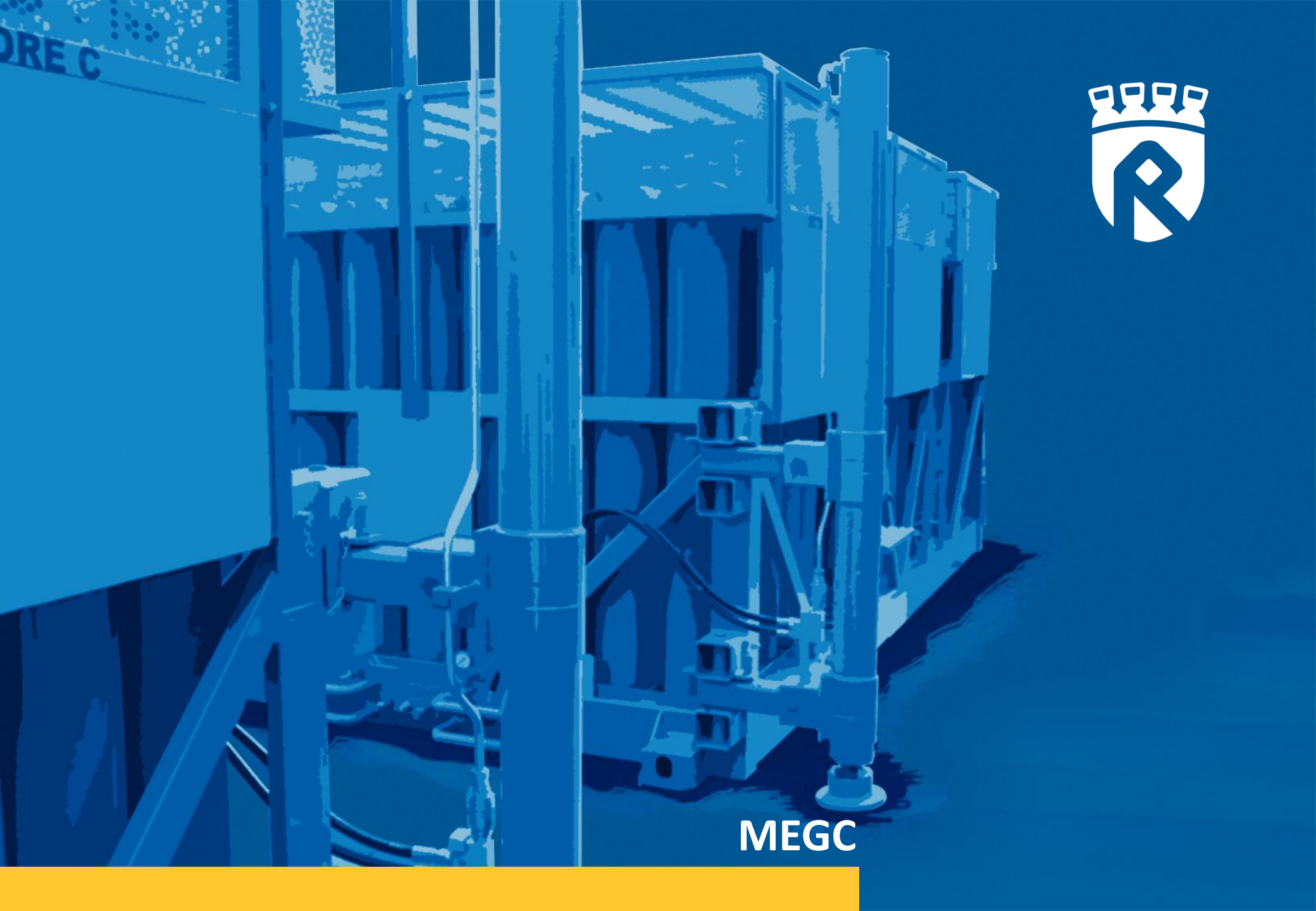
# Battery Vehicle



272 cylinders x 85 l







MEGC



# MEGC



MEGC differ in the type of gas and pressure. These products are useful at sites where the amount of gas required exceeds that of a cylinder bundle, with the advantage of being autonomous equipment not constrained by the use of a tractor.

## 135 bombole



| CONTENITORE GAS ELEMENTI MULTIPLI<br>MODELLO CGEM-135/M                 |   |
|---|---|
| PRODUTTORE<br>MANIFATTURA<br>1 - RE.CO.MA S.p.A.<br>Serramonte - Latina | NUMERO TOTALE ELEMENTI (doppiati) 135<br>ANNO DI FABBRICAZIONE 2012 |
| N° MATRICOLA CGEM<br>CGEM-135/2   | GAS DI RIMPIEMIMENTO<br>FILLING GAS UN 1046 ELIO COMPRESSO          |
| N° MATRICOLA TELAIO<br>CGEM-135/G/2                                     | NORMA DI RIFERIMENTO<br>EUROPEAN STANDARD UNI EN 13807:2005         |
| PROPRIETARIO<br>OWNER   | PAESE DI APPROVAZIONE<br>EUROPEAN STANDARD B                        |
| PRESSIONE DI ESERCIZIO<br>OPERATING PRESSURE PW 200 BAR                 | N° APPROVAZIONE ADR<br>B42109                                       |
| PRESSIONE DI PROVA (colluttore)<br>TEST PRESSURE PH 300 BAR             | ORGANISMO NOTIFICATO<br>NOTIFIED BODY APRAGAZ                       |
|   | ESPEZIONE INIZIALE<br>INITIAL INSPECTION 02/7817/P                  |

| RE.CO.MA S.p.A.  |                               |
|--|-------------------------------|
| Nome e indirizzo del costruttore: Via della Manovella, 171 (Italy) 04013 Serramonte (LT) |                               |
| Modello  | CGEM-135/M                    |
| Numero matricola   | CGEM-135/2                    |
| Gas contenuto - Numero ONU   | Elio (He) compresso - UN 1046 |
| Volume gas contenuto   | 6977 L                        |
| Prestazione di esercizio circuito gas  | 200 bar                       |
| Tara   | 11880 Kg                      |
| Massa lorda massima ammissibile (WMA)  | 14190 kg                      |
| Sollevamento massimo   | 1600 mm                       |
| Codice centralina oleodinamica   | 5100 P39 M5.5                 |
| abbinata   |                               |
| Potenza motore pompa   | 4 kW                          |
| Portata pompa  | 35 l/min                      |
| Prestazione statica di esercizio impianto 60 bar oleodinamico                            |                               |
| Tensione di alimentazione  | 380 V                         |

# MEGC

## 135 cylinders



| Basic configuration and technical specifications | MEGC 90 cylinders<br>x 60 liters each |                       | MEGC 135 cylinders<br>x 60 liters each |                       |
|--|---------------------------------------|-----------------------|--|-----------------------|
|  | Max filling pressure                  |                       | Max filling pressure                   |                       |
|  | 200 bar                               | 250 bar               | 200 bar                                | 250 bar               |
| Nominal water capacity                           | 5,4 m <sup>3</sup>                    |                       | 8,1 m <sup>3</sup>                     |                       |
| Total CNG weight                                 | 778 kg                                | 972 kg                | 1.166 kg                               | 1.458 kg              |
| Full-loading weight                              | 11.230 kg                             | 11.422 kg             | 16.441 kg                              | 16.733 kg             |
| CNG volume                                       | 1.080 Sm <sup>3</sup>                 | 1.350 Sm <sup>3</sup> | 1.620 Sm <sup>3</sup>                  | 2.025 Sm <sup>3</sup> |



# MEGC



**Methane gas**  
**54 cylinders**  
**50 lt**  
**Compressor**  
**Motor**

Collaboration  
between Recoma and  
BRC Gas Equipment created  
a prototype of a compressor station

**SELF PROPELLED**





# MEGC

## SELF PROPELLED



MEGCs with CNG engine, high performance compressor and oledynamic UNIT maximum autonomy



| Basic configuration and technical specifications | MEGC SELF-PROPELLED<br>111 cylinders x 50 liters each |                       | MEGC SELF-PROPELLED<br>77 cylinders x 90 liters each |                       |
|--|---|-----------------------|--|-----------------------|
|  | Max filling pressure                                  |                       | Max filling pressure                                 |                       |
|  | 200 bar   | 250 bar               | 200 bar  | 250 bar               |
| Nominal water capacity                           | 5,5 m <sup>3</sup>                                    |                       | 6,9 m <sup>3</sup>                                   |                       |
| Total CNG weight                                 | 792 kg  | 990 kg                | 997 kg   | 1.247 kg              |
| Full-loading weight                              | 18.962 kg   | 19.160 kg             | 19.120 kg  | 19.370 kg             |
| CNG volume                                       | 1.110 Sm <sup>3</sup>                                 | 1.375 Sm <sup>3</sup> | 1.386 Sm <sup>3</sup>                                | 1.733 Sm <sup>3</sup> |



**RECOMA GROUP**  
**Technology, Equipment and Services**  
**for Gas and Cryogenics**

BUSINESS PREMISES  
04013 Sermoneta (Latina) Italy  
Zona Industriale  
via della Meccanica  
tel/fax +39 0773 318342  
tel/fax +39 0773 320005

[info@recomagroup.com](mailto:info@recomagroup.com)  
[www.recomagroup.com](http://www.recomagroup.com)

